

Green Silicon Carbide grains to be used as a loose abrasive in wire sawing applications.

Green silicon carbide produced in accordance with existing industrial standards or according to individual customer specifications.

Saint-Gobain SUPERSLICE is used to slice wafers out of silicon ingots or other hard brittle materials, and is designed to optimize cut rate while minimizing TTV, warp, bow and subsurface damage.

Packaging 1.000 kg big bags

Typical Chemistry

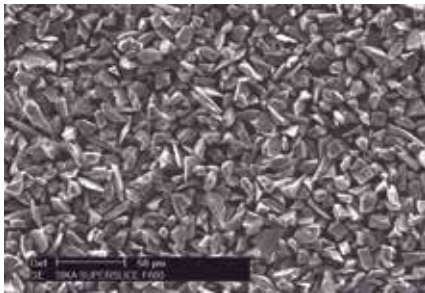
SiC	Free-C	Free-SiO ₂	Free-Si	Fe ₂ O ₃
98.80 %	0.30 %	0.70 %	0.40 %	0.10 %

Grit Sizes and Shapes

FEPA Standard		
Grit No.	ds 50% μm	% mean circularity (ds 3% - ds 50%)
F600	8.3 - 10.3	< 0.880
F800	5.5 - 7.5	< 0.880
F1000	4.1 - 5.3	n.a.

Analytical Procedures:

Particle Size Distribution is measured according to FEPA Standard 42-2:2006
 Chemistry according ANSI B 74.15 1992
 Circularity measured by Malvern Sysmex FPIA-3000



SiC particles characterized by sharp angular shapes, providing high cut rate.

Particularly suitable for Photovoltaic applications.

The information contained in this Product Information Document is the sole property of Saint-Gobain, and cannot be distributed outside Saint-Gobain or its Customers, entirely or by parts, without the prior consent of Saint-Gobain. The Product Information Documents display typical characteristics for Saint-Gobain's products as currently produced in Saint-Gobain's various manufacturing locations. These typical characteristics do not constitute a precise Customer Specification, which has to be elaborated separately between the Customer and Saint-Gobain in the frame of a commercial offer. Only with this precise Customer Specification can Saint-Gobain be bound to any commitment or liability regarding the quality of its products.